

Riverside Elementary School

8737 South 1220 West
West Jordan, Utah 84088
(801) 565-7484
FAX (801) 302-4953
Ronna Hoffman, Principal

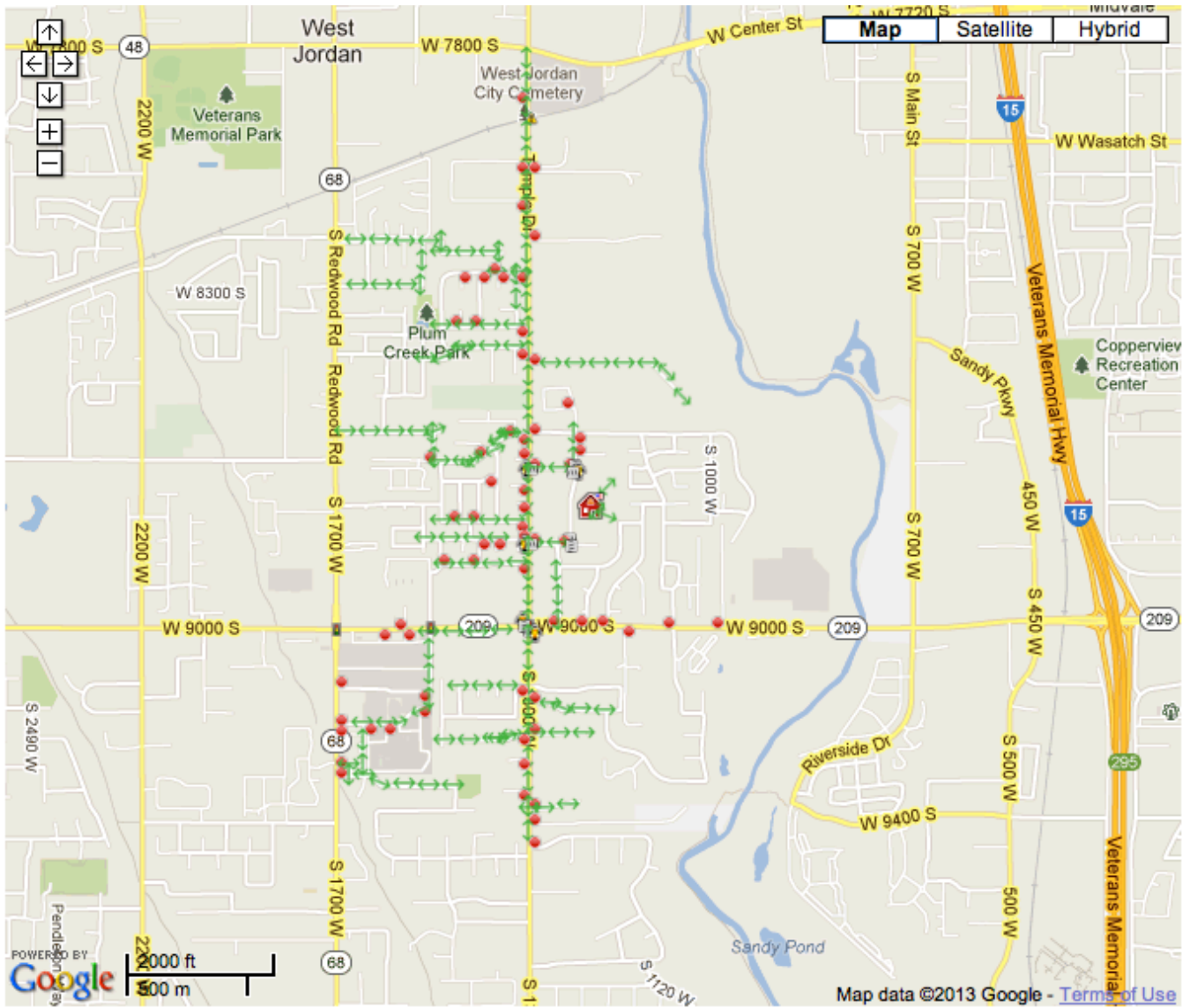
Dear Parents,

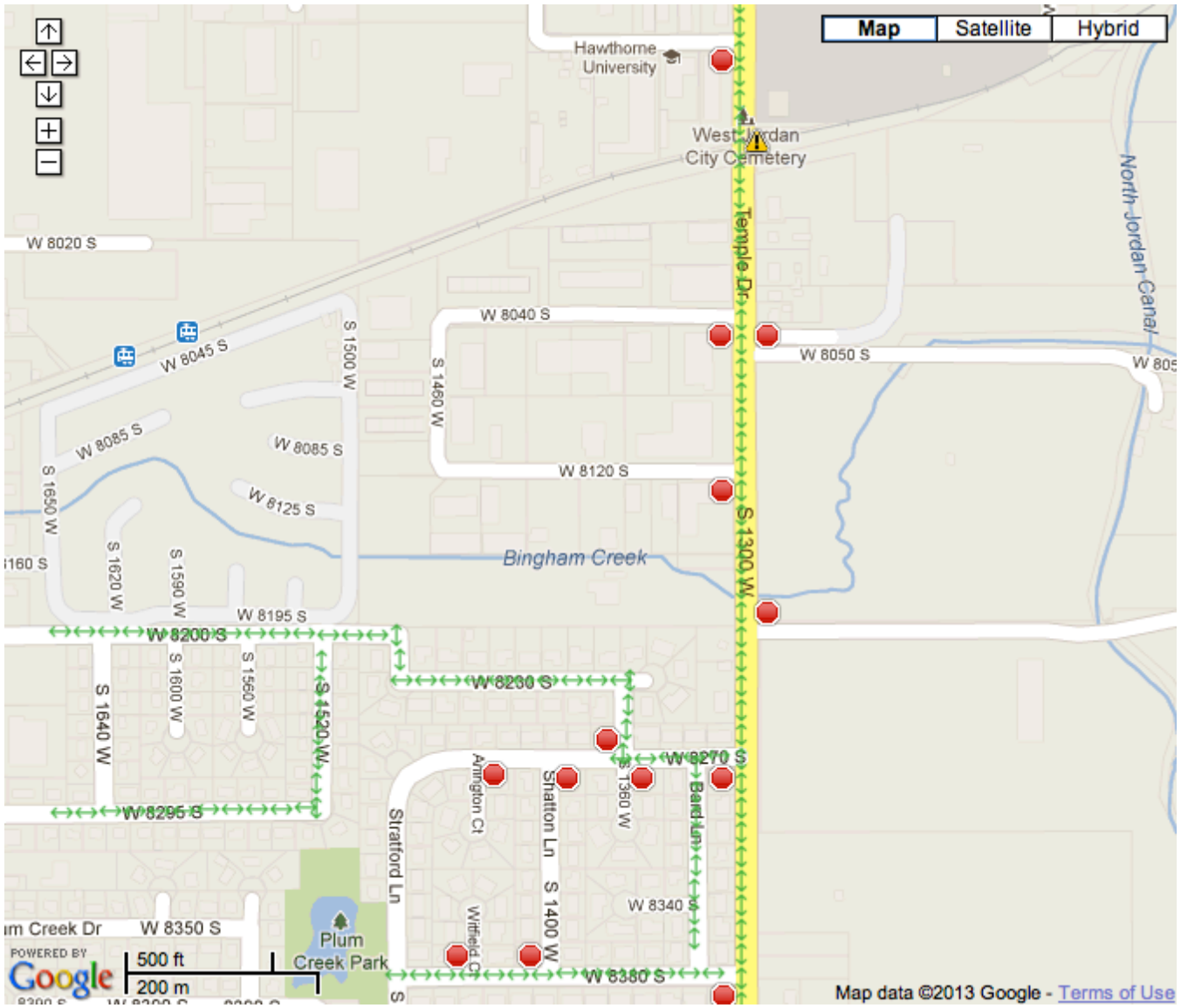
In accordance with the School Zone Safety Act established by the Utah State Legislature, Riverside Elementary has developed suggested walk routes for our students. We encourage you to read the following information and discuss it with your children. We further encourage you to walk the route with your children, pointing out areas of concern and emphasizing the need for pedestrian safety.

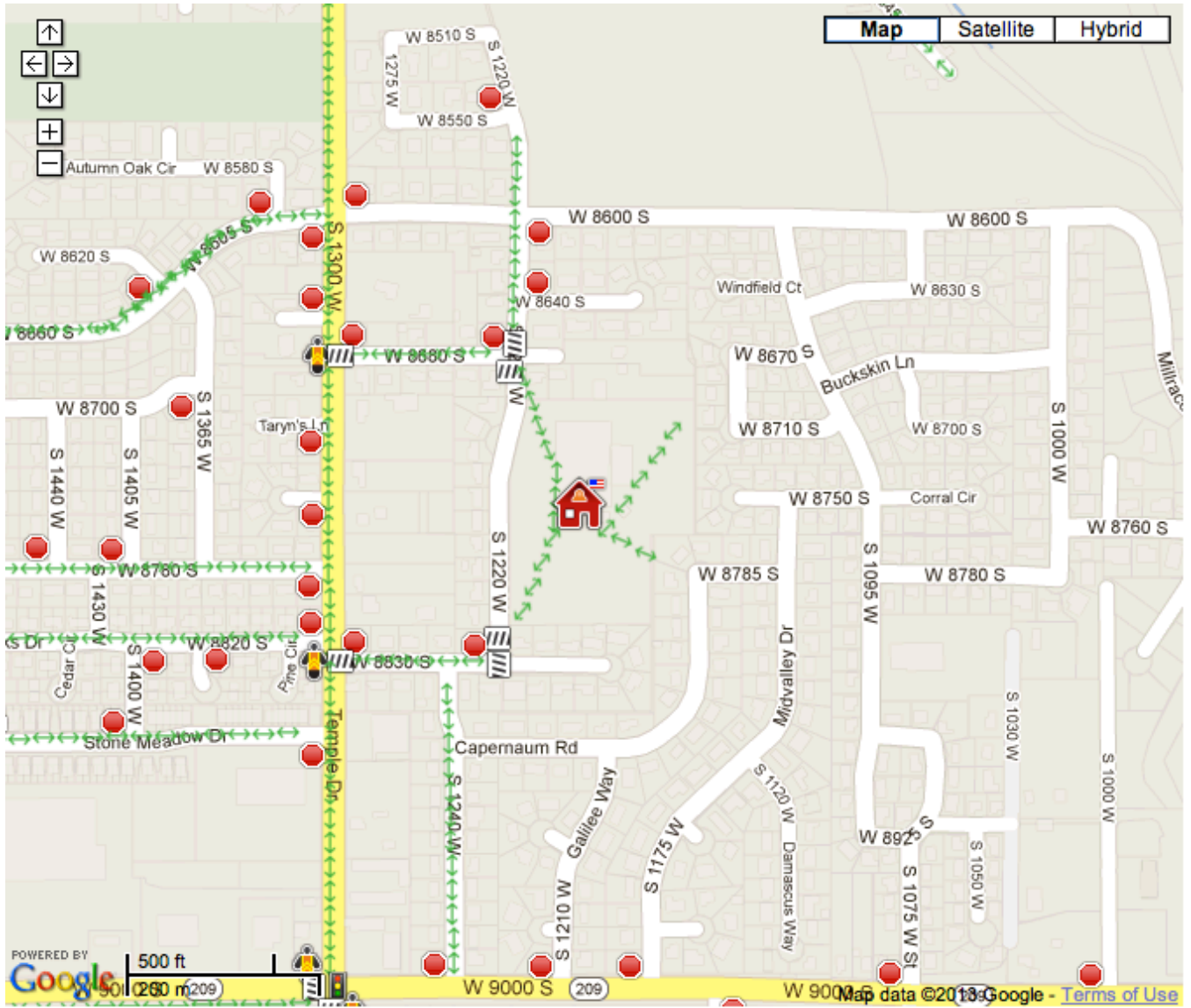
- Riverside Elementary is located at 8737 South 1220 West in West Jordan.
 - Crosswalks for Riverside are located at the intersection of Twin Oaks Dr. (8820 S) and 1300 West, at 8680 S. and 1300 West, at 8830 S. and 1220 W, at 8680 S. and 1220 W and at 9000 S and 1300 W. Crossing Guards are posted at these sites.
 - School Safety Patrol members are posted at the north and south access to the school and at other locations to help our students.
 - Flashing lights are located on 1300 West and denote our “School Crossing Zone”. The speed limit in this zone is 20 MPH. We request that you respect the speed limit in this zone and other areas around the school for the safety and protection of our students.
1. Students living west of 1300 West may walk to one of the crossing guards on 1300 West and cross with the crossing guard and proceed to the school. **Please do not allow your children to cross 1300 West anywhere other than where the crossing guards are posted.**
 2. Students living in the area from 1300 West, east to the Jordan River and north of 9000 South may enter the school at the north or south entrances and at the northeast and southeast corners of the playground.
 3. Students living east of 1300 West to the Jordan River and south of 9000 South will walk along 9000 S. to 1300 W. Students will cross 9000 South and proceed north on 1300 West to 8830 South. Proceed east to 1220 West, then north to the school.

4. Students living in River Ridge and Countrywood subdivisions walk east to 1300 West; north on 1300 West to 9000 South. Cross 1300 West to the Conoco station. Cross north on 9000 South and walk along 1300 West to 8830 South. Cross 8830 South, walking east to 1220 West, then north to the school.
5. Students living in the Stonebridge Apartments walk north on 1510 West to 9000 South; East along 9000 South to 1300 West. Cross 1300 West to the Conoco station. Cross 9000 South; walk along 1300 West to 8830 South. Cross 8830 South, walking east to 1220 West, then north to the school.
6. Students living in Brigadoon Park Estates walk west to 1640 West; north to Fox Park Drive; east on Fox Park Drive to 9000 South; east on 9000 South to 1300 West. Cross 9000 South; walk along 1300 West to 8830 South. Cross 8830 South, walking east to 1220 West, then north to the school.
7. Students living in Fox Point subdivision walk east to 1300 West. Walk along the west side of 1300 West to crossing guard. Cross 1300 West, and proceed to the school.
8. Students living in the Plum Creek subdivision walk east on Bristol Ridge (8420 South) to 1300 West. Walk along the west side of 1300 West to crossing guard. Cross 1300 West and proceed to the school.
9. Students living in the Greenbriar and Brookside subdivision walk east on 8200 South, then south on 1480 West, east on 8230 South, south on 1360 West, east on 8270 South, south on 1325 West, east on 8380 South to 1300 West, south to crossing guard. Cross 1300 West and proceed to the school.
10. Students living on the south side of 7800 South; walk to 1300 West; walk south along 1300 West, crossing the railroad tracks at the "Turn Back" or "Z" crossing, to the crossing guard. Cross 1300 West and proceed to the school.
11. Students riding bikes to school should use safety precautions at all times. Once they enter school property they are to get off their bike and walk it on the school grounds. They are to walk their bikes to the bike rack. (The bikes will be locked during the school day). Students are encouraged to wear a helmet if they ride their bikes.
12. Students who are carpoled to school coming from the north (from 8600 S or 8680 S), may enter the NORTH PICK UP AND DROP-OFF at the south entrance then exit onto 1220 W through the north exit.
13. Students who are carpoled to school coming from the south (from 8830 S), may enter the SOUTH PICK UP AND DROP-OFF ZONE at the south entrance, then exit onto 1220 W through the north exit.
14. Students will exit cars on the passenger side only, directly to the sidewalk, walk along the sidewalk and enter the school playground at Gate A or Gate B.

15. Students being dropped off along the fence line between the crosswalk on 8830 S and the school should unload on the passenger side of the vehicle, walk along the sidewalk and enter the school playground through Gate A or Gate B.
16. The school parking lot and drop off station will become very congested with traffic before and after school. To avoid some of the congestion, students may also be dropped off along the east sidewalk along the fence just south of the school and walk in to the school grounds at Gate B. Be sure to have students get out of the car on the sidewalk side or passenger side of the car. Students should cross 1220 West **ONLY** at the crosswalks.
17. Another possibility to help avoid further congestion at the school, the City of West Jordan has recommended that parents transport their children to the church parking lot located at 8950 South and 1300 West then walk the children to the crossing guard at 8830 South and 1300 West. Children can then cross with the crossing guard, follow 8830 South to 1220 West and cross with the crossing guard then proceed to the school.





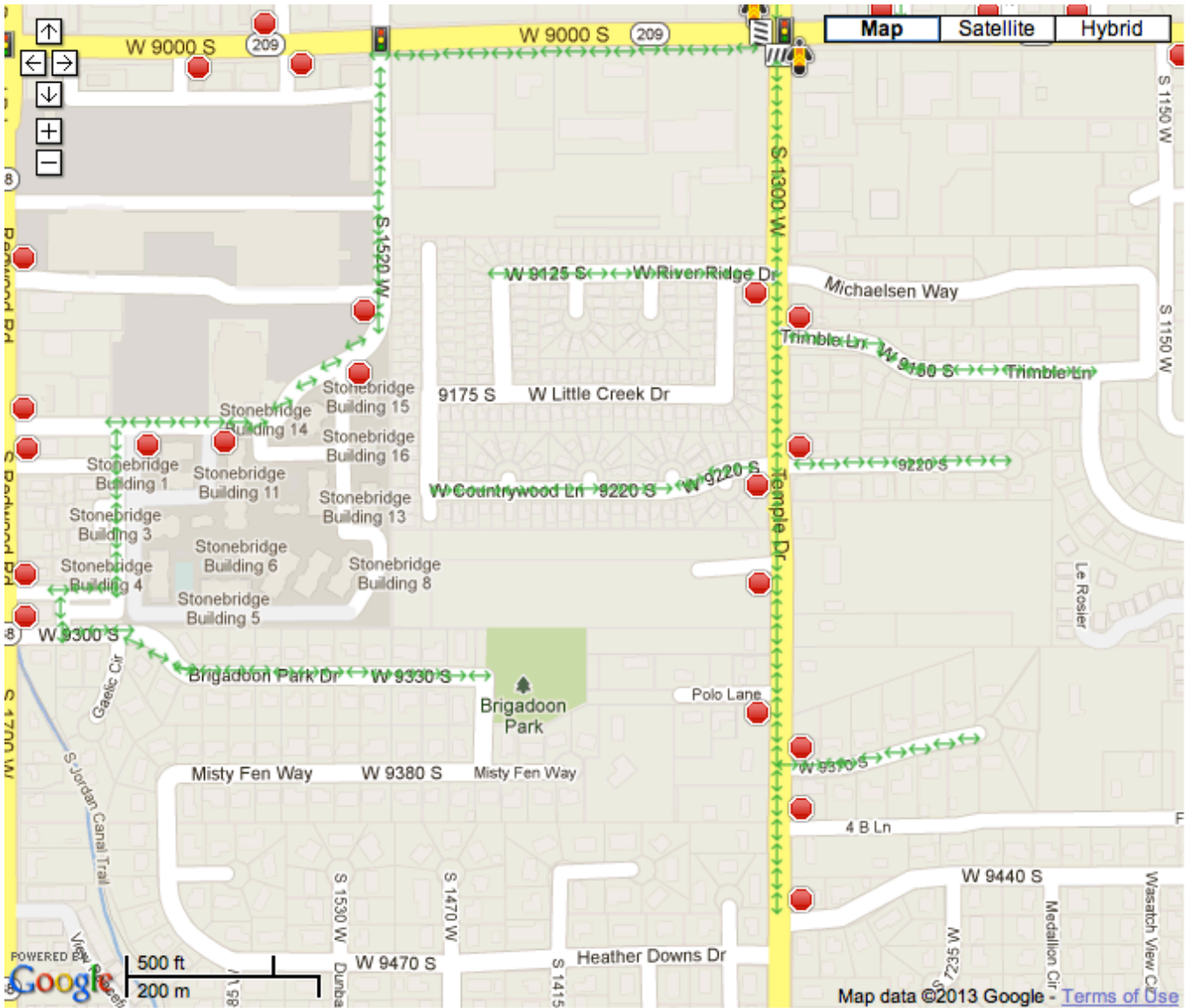


Map Satellite Hybrid

Map controls:
 - Home button (house icon)
 - Street View pegman
 - Navigation arrows (up, down, left, right)
 - Zoom in (+) and zoom out (-) buttons

Map data ©2013 Google - [Terms of Use](#)

Street names shown include:
 W 8800 S St, Ponderosa Ln, Twin Oaks Dr, Cedar Ct, W 8760 S, S 1430 W, W 8820 S, S 1400 W, Stone Meadow Dr, Pine Ct, Temple Dr, W 8830 S, Capernaum Rd, Galilee Way, S 1220 W, S 1210 W, S 1175 W, Midway Valley Dr, W 9000 S, W 9125 S, W River Ridge Dr, Michaelsen Way, Tribble Ln, W 9150 S, W Little Creek Dr, 9175 S, W Countrywood Ln, 9220 S, S 1300 W, S 1150 W, S 1150 W, S 1120 W, Damascus Way, S 9220 S, S 1500 W, Stonebridge Building 15, Stonebridge Building 16, Stonebridge Building 11, Stonebridge Building 13.



Amended: Principal Initials/Date _____ Municipality/City Rep Initials/Date _____
 Municipality/City Rep Initials/Date _____ Municipality/City Rep Initials/Date _____